

Southwark's Environment & Community Engagement Scrutiny Commission

TfL initiatives to support Sustainable Freight

Dr. Polyvios Polyviou
Strategy and Planning Manager – Freight

27 November 2023



**TRANSPORT
FOR LONDON**

London's pathway to Net Zero



The Mayor's Transport Strategy (MTS)

Published: March 2018

- Within the MTS, London committed to be **zero carbon by 2050**
- Also focus to make transport **zero-carbon**
- And to **adapt** to the effects of climate change
- For freight, it aims to:

“reduce the number of lorries and vans entering central London in the morning peak (07:00-10:00) by 10% by 2026”

▪ March 2019

The Mayor of London, Sadiq Khan, set an ambitious target for London to be **net zero carbon by 2030**.



- The climate emergency **accelerated the 2050 zero carbon goal**
- ‘Accelerated Green’ pathway to meet 2030 net zero carbon

Supporting freight through our policies and strategies

The Freight and Servicing Action Plan

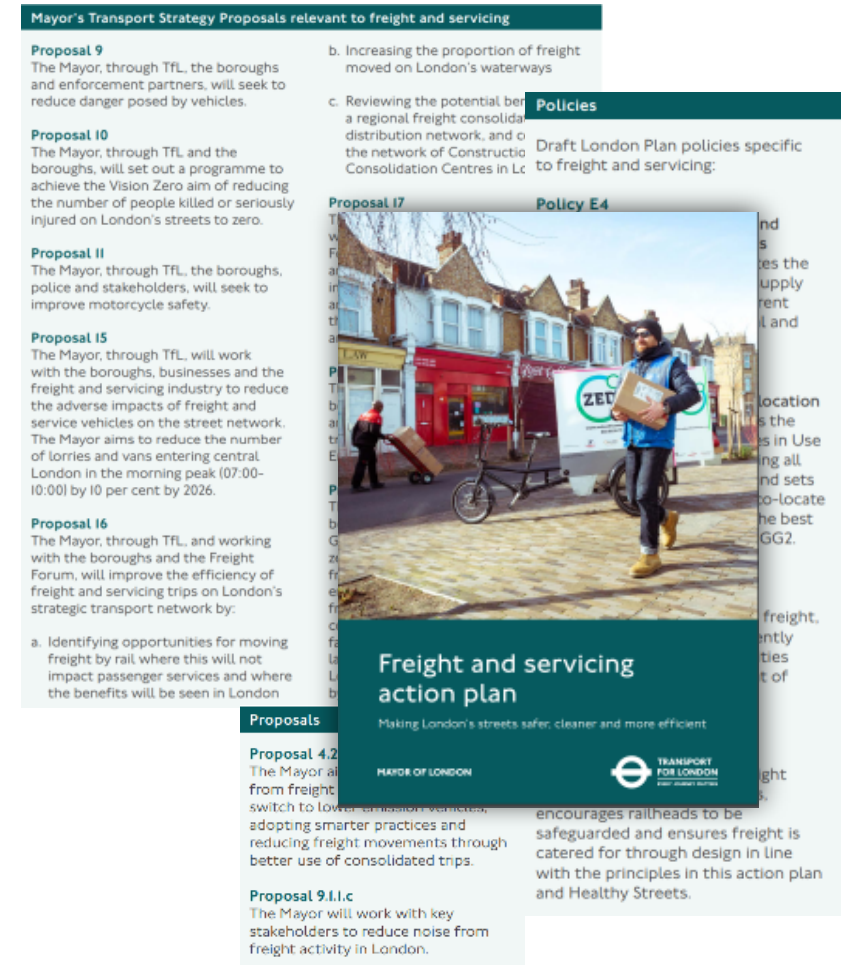
- **Published:** March 2019
- **Vision:** the safest, cleanest and most efficient freight transport of any city in the world (Freight & Servicing Action Plan, 2019)
- **Overarching policies:**
 - Mayor’s Transport Strategy
 - London Plan
 - London Environment Strategy
- **Individual work streams grouped into 4 priority areas:**

Safe

Clean

Efficient

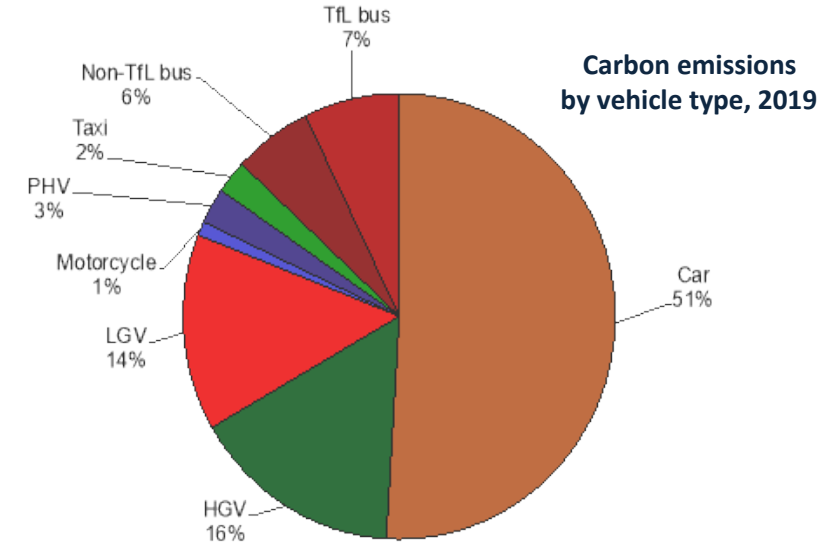
Land Use



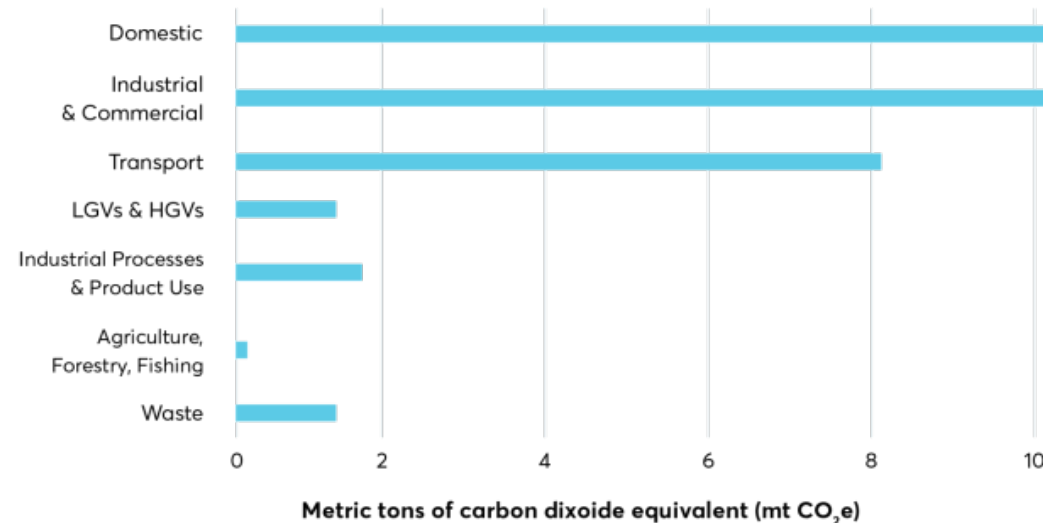
The need for sustainable freight

Transition to zero emission freight can have an **outsized emissions reduction impact.**

- Freight transport accounts for **one third of UK's transport emissions.**
- **Road freight alone comprises 77% of the freight transport total** (*DfT Dec 2021, BEIS 2020*).
- In London, HGVs and LGVs account for **30% of road transport GHG emissions** (2019 figures), second only to cars (51%).



Emissions by sector



- Despite making up 15% of vehicle-miles in London, freight vehicles emit a quarter of the total carbon emissions in the city coming from transport (CFL, 2021), showing highly **carbon intense operations** compared with other vehicles.

Source: London Energy and Greenhouse Gas Inventory (2018). Note this is an estimate of emissions within the city.

Key TfL initiatives to support sustainable freight



Fleet Operator Recognition Scheme (FORS)

Changes to environmental requirements in version 7 of the standard



EV charging delivery across Places for London and TfL's estate

Electric Vehicle Infrastructure Strategy and clean freight engagement



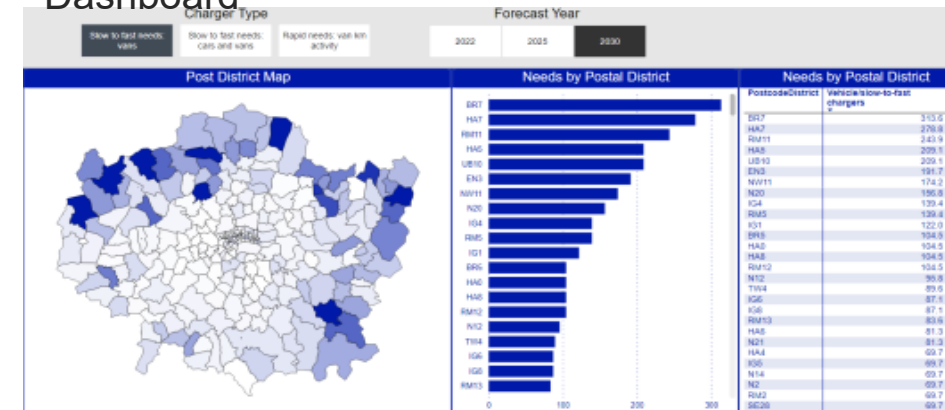
LoCity

Platform to help organisations switch to cleaner fuels.

Zero Emission GLA deliveries through **responsible procurement**



Commercial Fleet Dashboard



Key TfL initiatives to support sustainable freight

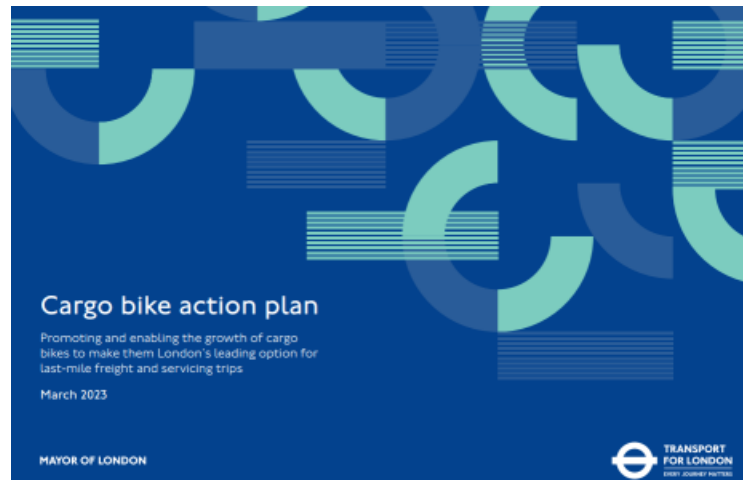


Rail freight

In 2021, London's first Rail Freight Strategy since 2007 was published with renewed focus on express light rail freight

Water freight

- DHL daily service with electric vehicles to Riverside Pier and cargo bikes from Bankside Pier.
- Pamphlet for light freight trials by water.



Cargo Bikes

Action Plan – 11 specific TfL commitments and 5 additional recommendations for the industry

Key TfL initiatives to support sustainable freight



Creating a sustainable e-commerce ecosystem: Parcel Lockers

Retailer lockers are being rolled out across the TfL estate, partnering with Amazon and InPost.

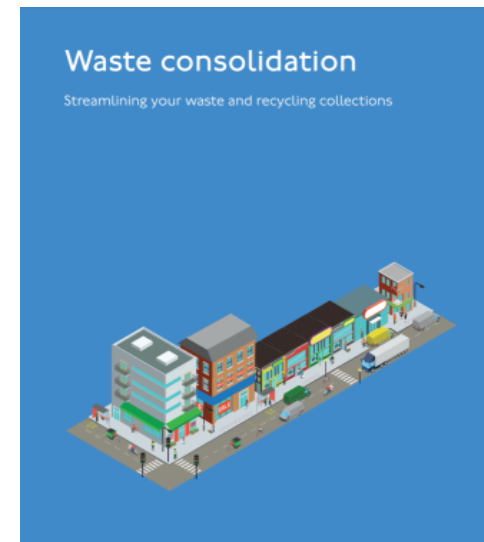
Now we have over 50 locations across our transport network.

[We're communicating the environmental benefits of lockers](#), and other sustainable shopping behaviours, to our customers at key times of year.

Support businesses as consumers

We provide support to businesses as consumers to streamline deliveries and servicing.

Our [self-serve toolkits](#) help them to reduce the frequency of deliveries through consolidation, switch to cargo bikes, receive deliveries at quieter times,

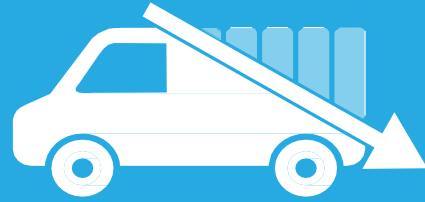


MAYOR OF LONDON



MAYOR OF LONDON





LONDON FREIGHTL



Transport
for London

AB

MAYOR OF LONDON



IN PARTNERSHIP
WITH



MOVED BY



HUMANISING
AUTONOMY

5 Trials implemented – final reporting due soon:

1. E-bikes and e-walkers (Fernhay, UPS)
2. Kerbside management (AppyWay, UPS, Royal Mail)
3. Sustainable type of tyres (ENSO Tyres, DPD, Royal Mail)
4. Air/noise pollution (EMSOL, Guys & St Thomas' Trust, John Leis, REEF)
5. Near misses (Humanising Autonomy)

Dr. Polyvios Polyviou

Strategy and Planning Manager – Freight

polyviospolyviou@tfl.gov.uk



**TRANSPORT
FOR LONDON**